

Victorian Applied Learning  
Association  
(VALA) Conference  
March 2009

Sue Gunningham  
[sue.gunningham@bigpond.com](mailto:sue.gunningham@bigpond.com)

Is it about 'me'?

Create a graph that shows how hungry you are from when you get up until you go to bed

My thinking

Real Situation

I paid 90 cents for a 3 min call on my mobile including the standard 15cents flagfall.

How much will I pay for a 5 minute call?

Picture

**THINK  
BOARD**

Symbols

# MUESLI BARS

CHOCOLATE CHIP



8 x 12g

## SERVING SIZE - 1 bar

Energy 540 kJ  
Protein 2.3 g  
Fat - Total 4.1 g  
Carbohydrates -  
Total 19.7 g  
Sugar 6.0 g  
Dietary fibre 1.8 g  
Sodium 100 mg

# WHEAT CRACKERS

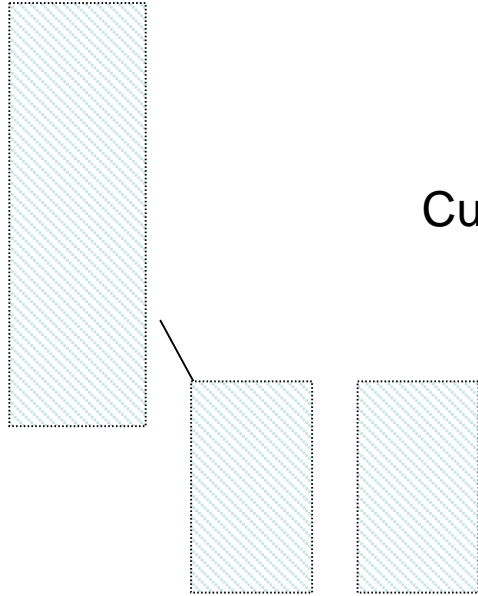


## SERVING SIZE - 4 dry biscuits

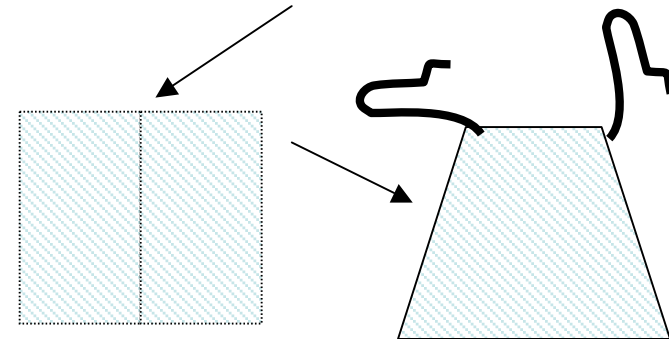
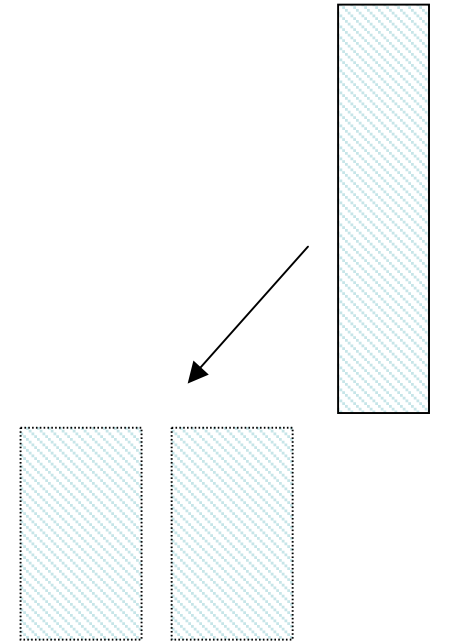
Energy 209 kJ  
Protein 1.2 g  
Fat - Total 1.1g  
Carbohydrates -  
Total 8.8 g  
Sugar 0.2 g  
Sodium 66mg



Curtains 2 m long  $\times$  90 cm wide



Elastic waisted skirt

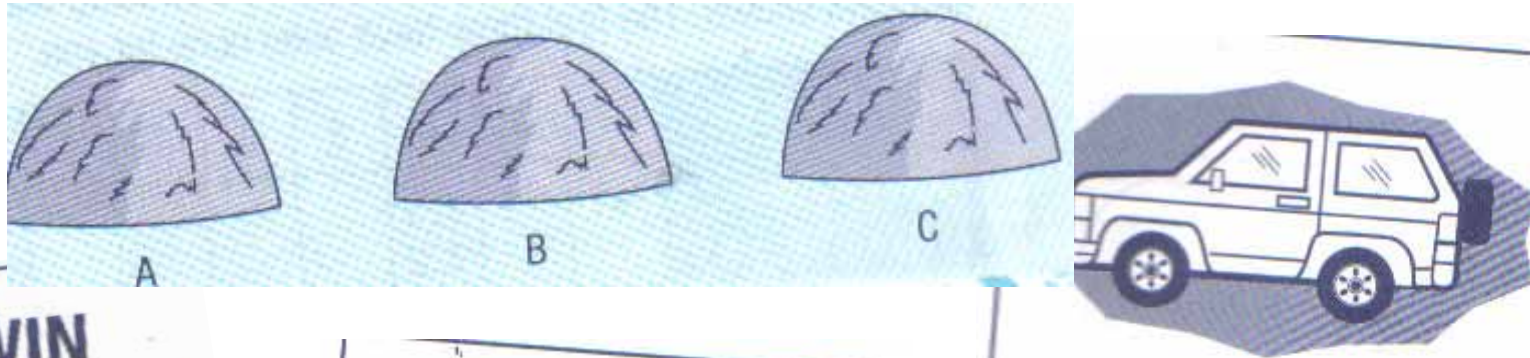


Draw-string cape

***Will the skirt be long enough for a 1.6 m tall girl?***

***How far down will the cape reach?***

# So...are you feeling lucky?



## WIN K200 000!

No luck lately?  
This could be your  
lucky day!  
Buy a ticket in the  
'I deserve this'  
raffle and change  
your future.  
K10 per ticket.  
50 000 tickets sold.

## Don't cook tonight!

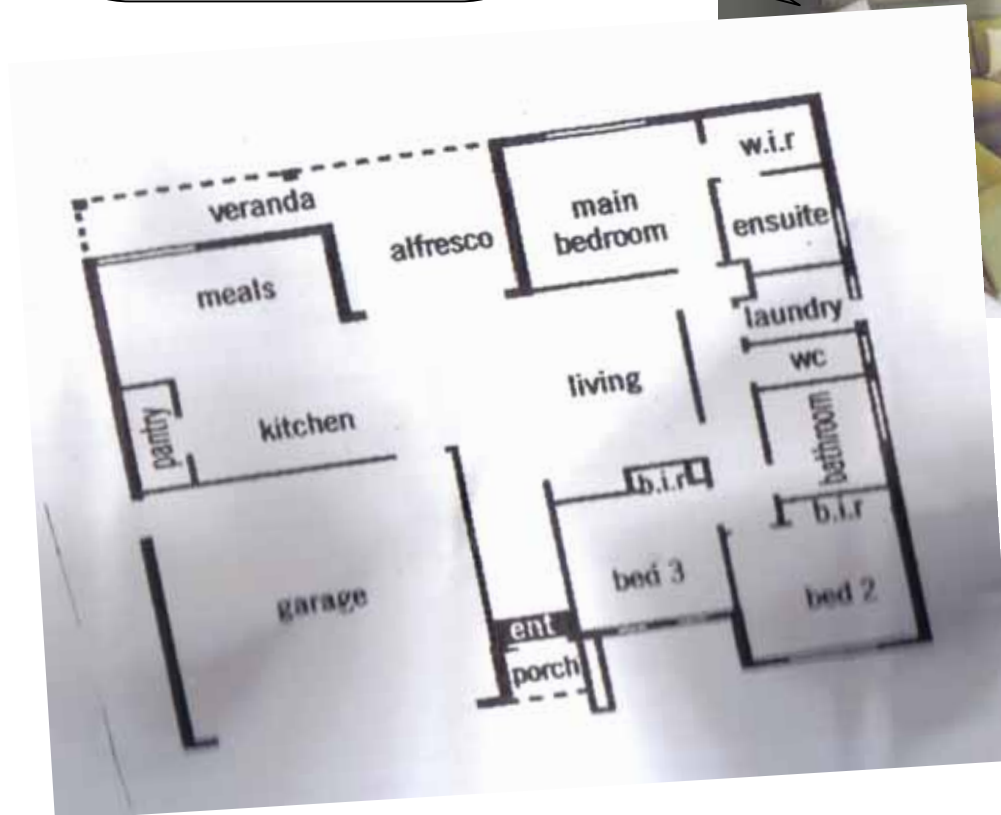
- Buy a K2 raffle ticket  
and **WIN**
- a large roast chicken
  - 2 large serves of chips
  - 1.25 L cola
  - 1 large coleslaw

One lucky customer  
drawn each hour.  
Winners must be in the store  
to claim their prize.

## WIN WIN WIN

1 lucky winner will  
win a luxury 4-wheel-drive.  
99 other lucky ticket holders  
will win a total prize pool  
valued at K5000.  
Tickets K3 each.  
100 000 tickets to be sold.

Where was  
the  
photographer  
standing?



## CABLE BEACH BROOME

ITEM	1 HOUR	HALF DAY (4 Hours)	FULL DAY (Until 5pm)
Umbrella	\$4.00	\$10.00	\$12.00
Deck Chair	\$2.00	\$ 5.00	\$ 6.00
Sunlounge	\$5.00	\$10.00	\$15.00
Boogie Board	\$5.00	\$10.00	\$15.00
Bag of Kids Toys	\$2.00	\$ 5.00	\$ 6.00
Surf Boards:			
Soft Tops	\$10.00	\$20.00	\$30.00
Fibreglass	\$15.00	(\$20 DEPOSIT)	N/A

COMBO DEALS	2 HOUR	HALF DAY	FULL DAY
“Decky” Combo Umbrella, 2 Deck Chairs	\$15.00	\$18.00	\$20.00
“Sunlovers” Combo Umbrella, 2 Sun Lounges	\$20.00	\$25.00	\$35.00
“Family” Combo Umbrella, 2 Sun Lounges, 2 Boogie Boards, Toys	\$30.00	\$35.00	\$50.00

**ALL HIRES INCLUDE SUNSCREEN & COLD WATER**

**OPEN 7 DAYS 8am to 5pm**

# What could you tell the boss?

**Bulb sales for week ended Sunday 15th June**

	<b>Gladioli</b>	<b>Tulips</b>	<b>Daffodils</b>	<b>Jonquils</b>	<b>Hyacinths</b>	<b>Orchids</b>
Mon	7	2	10	6	2	–
Tues	–	3	7	4	–	–
Wed	11	–	3	2	3	–
Thurs	2	–	5	4	–	2
Fri	4	2	8	12	–	1
Sat	21	8	14	10	5	3
Sun	14	6	15	8	3	1

# Jigsaw match

$9 \overline{) 0.75}$	A team of 9 guys found a nugget that weighed 0.75 grams. What is each guy's share?	How many 0.75 litre tins hold as much paint as 9 tins holding 1 litre each?	0.75 divided by 9
9 divided by 0.75	$0.75 \div 9$	$0.75 \overline{) 9}$	$9 \div 0.75$

Energy consumption in 2007 increased 3.2 times that of 1997 yet the population grew by just 14%

Stress is the major 'injury hotspot' for education workers, and next is back injury which accounts for 18% of reported injuries

Interest is calculated daily on the balance outstanding and debited from the account monthly

A 1kW solar system provides about 25% of an average home's electricity needs and costs \$4495 (inc GST) fully installed. A government rebate of \$8000 is available

# Numeracy

- Core mathematical knowledge
- Capacity to critically apply what is known in a particular context to achieve a desired purpose
- Processes and strategies to communicate what was done and why

(MYNRP Report 2001)